

# JDN ULTRA-LOW MONORAIL HOISTS



**J·D·NEUHAUS**  
1745  
engineered for extremes

# JDN ULTRA-LOW MONORAIL HOISTS

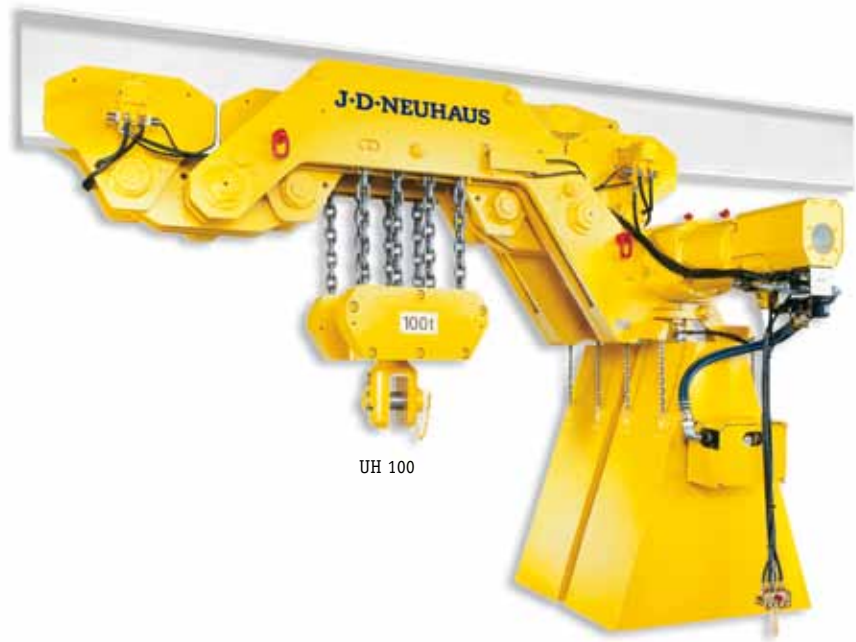


**Capacities:**  
**4 t up to 100 t**  
**Air pressure: 6 bar**

Where loads have to be lifted and transported in extremely reduced spaces the **JDN Ultra-Low Monorail Hoists** provide the ideal solution. For example the Ultra-Low Monorail Hoist with a load capacity of 6 t has a headroom of only 230 mm.

## Standard Features

- Ideally suited for working in hazardous areas (explosion risk)
- Insensitive to humidity, dust and temperatures from -20°C up to +70°C
- Extremely low headroom
- Low air consumption
- Available with increased spark protection

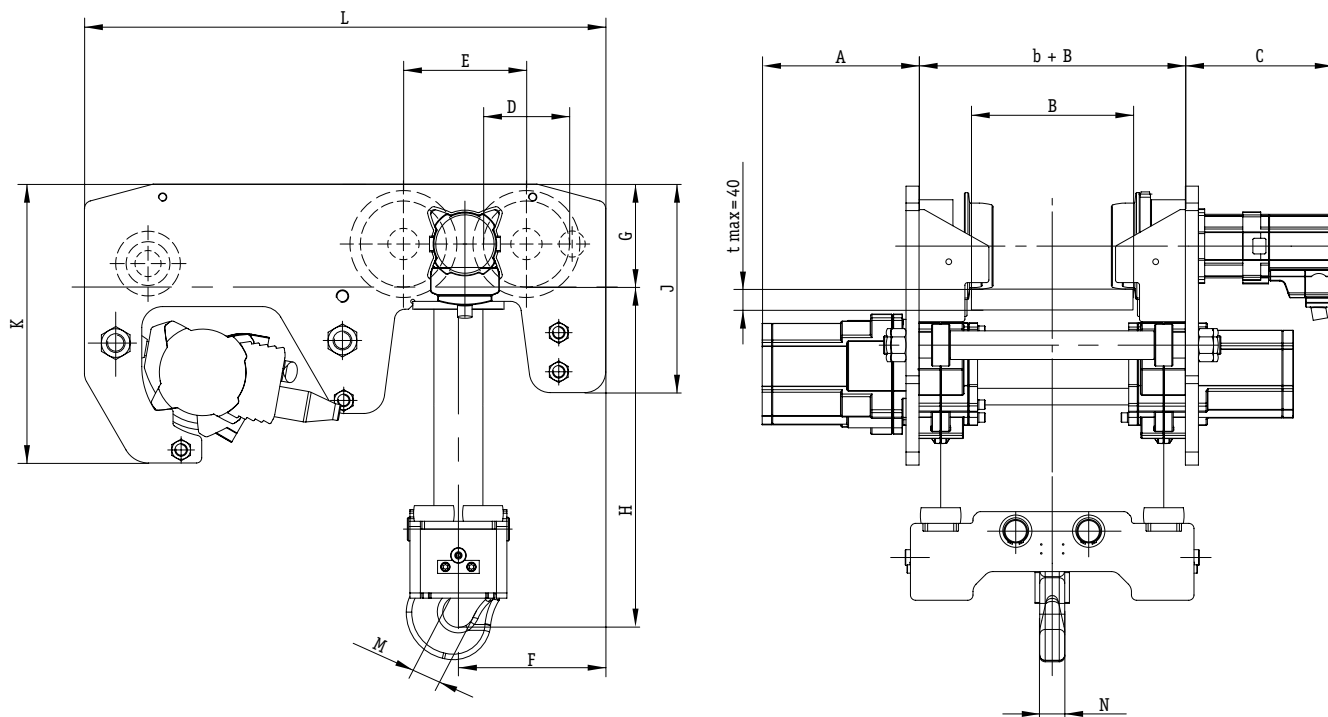


UH 100

## Technical Data

Type		UH 4	UH 6	UH 8	UH 12	UH 16
Capacity	mt	4	6	8	12	16
Air pressure	PSI	85	85	85	85	85
	bar	6	6	6	6	6
Number of chain strands		2	2	4	4	4
Motor output	kW	2.5	2.5	2.5	2.5	2.5
Lifting speed at full load	ft/min	9.84	6.56	4.59	2.95	2.13
	m/min	3.0	2.0	1.4	0.9	0.65
Lifting speed without load	ft/min	19.69	14.76	9.51	7.22	3.94
	m/min	6.0	4.5	2.9	2.2	1.2
Lowering speed at full load	ft/min	24.61	17.06	11.81	8.20	4.92
	m/min	7.5	5.2	3.6	2.5	1.5
Air consumption at full load - lifting	cfm	141.26	141.26	141.26	141.26	141.26
	m <sup>3</sup> /min	4.0	4.0	4.0	4.0	4.0
Air consumption at full load - lowering	cfm	194.23	194.23	194.23	194.23	194.23
	m <sup>3</sup> /min	5.5	5.5	5.5	5.5	5.5
Air connection		G 3/4	G 3/4	G 3/4	G 3/4	G 3/4
Hose dimension (Ø inside)	inch	3/4	3/4	3/4	3/4	3/4
	mm	19	19	19	19	19
Weight with standard lift	lbs	1014.13	1036.17	1190.50	1212.54	1234.60
	kg	460	470	540	550	560
Chain dimension	mm	13 x 36	13 x 36	13 x 36	13 x 36	13 x 36
Weight of chain	lbs/ft	2.6	2.6	2.6	2.6	2.6
	kg/m	3.8	3.8	3.8	3.8	3.8
Standard lift	ft	10	10	10	10	10
	m	3	3	3	3	3
Length of control at standard lift	ft	6.5	6.5	6.5	6.5	6.5
	m	2	2	2	2	2
Noise level at full load <sup>1</sup> - lifting	dB(A)	78	78	78	78	78
Noise level at full load <sup>1</sup> - lowering	dB(A)	80	80	80	80	80

<sup>1</sup>Measured at 1m distance acc. to DIN 45635 part 20  
 Group mechanism: M3 (1 Bm)  
 Technical data for higher capacities on request.



## Dimensions

Type		UH 4	UH 6	UH 8	UH 12	UH 16
A	inch	7.68	12.01	7.68	12.01	12.01
	mm	195	305	195	305	305
B	inch	7.87	7.87	7.87	7.87	7.87
	mm	200	200	200	200	200
C	inch	11.16	11.16	11.16	11.16	11.16
	mm	284	284	284	284	284
D	inch	6.50	6.50	6.50	6.50	6.50
	mm	165	165	165	165	165
E	inch	9.29	9.29	9.29	9.29	9.29
	mm	236	236	236	236	236
F	inch	12.99	12.99	11.14	11.14	11.14
	mm	330	330	283	283	283
G	inch	7.78	7.78	7.78	7.78	7.78
	mm	197.5	197.5	197.5	197.5	197.5
H min. 150 <= b <= 310	inch	9.06	9.06	-	-	-
	mm	230	230	-	-	-
H min. 150 <= b <= 230	inch	-	-	11.61	11.61	13.15
	mm	-	-	295	295	334
H min. 230 <= b <= 310	inch	-	-	10.87	10.87	12.40
	mm	-	-	276	276	315
J	inch	15.75	15.75	15.75	15.75	15.75
	mm	400	400	400	400	400
K	inch	21.06	21.06	21.06	21.06	21.06
	mm	535	535	535	535	535
L	inch	39.37	39.37	39.37	39.37	39.37
	mm	1000	1000	1000	1000	1000
M	inch	1.57	1.57	1.73	1.73	2.09
	mm	40	40	44	44	53
N	inch	2.01	2.01	2.60	2.60	3.23
	mm	51	51	66	66	82

Dimensions for higher capacities on request.