



"innovation in its most functional form"

## PRODUCT DATA SHEET

# FA1TM

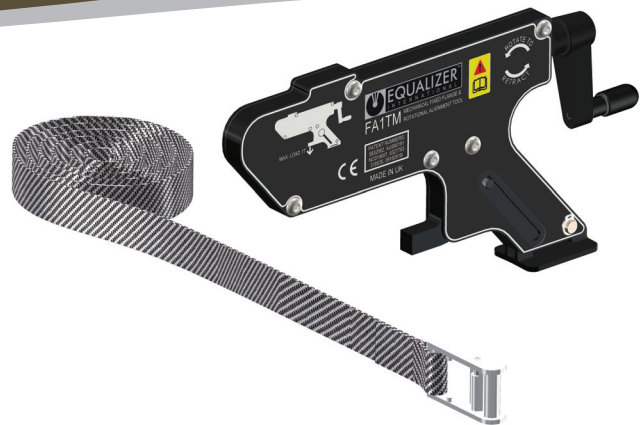
## MECHANICAL FIXED FLANGE ALIGNMENT TOOL

ALIGNING FORCE: = 1 T (10 kN)

TOOL WEIGHT = 1.6 kg (3.5 lbs)

### KIT COMPONENTS

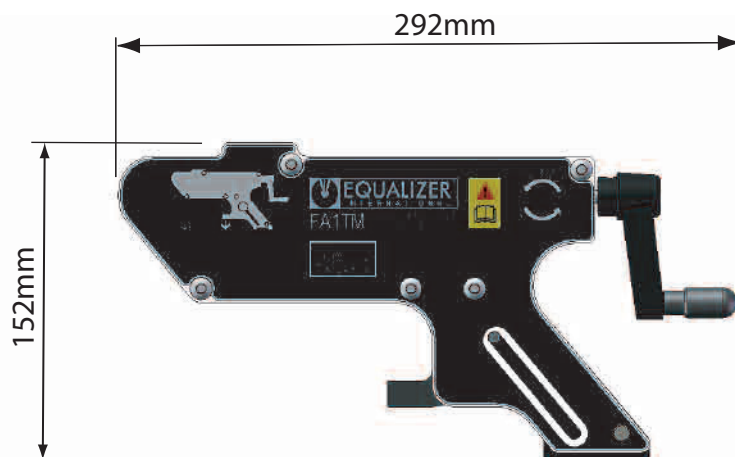
- 1 x FA1TM Tool
- 1 x Ratchet Strap
- 1 x Instruction Manual
- Product Code: FA1TMSTD



### WEIGHTS AND DIMENSIONS

Tool Weight = 1.6 kg (3.5 lbs)  
Gross Weight = 2 kg (4.4 lbs)

Box Dimensions:  
170 x 360 x 155mm  
(6.7"x14.2"x6.1")



info@equalizerinternational.com  
www.equalizerinternational.com

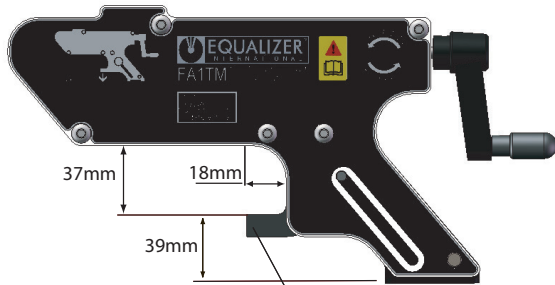
# FA1™

MECHANICAL FIXED FLANGE AND  
ROTATIONAL ALIGNMENT TOOL

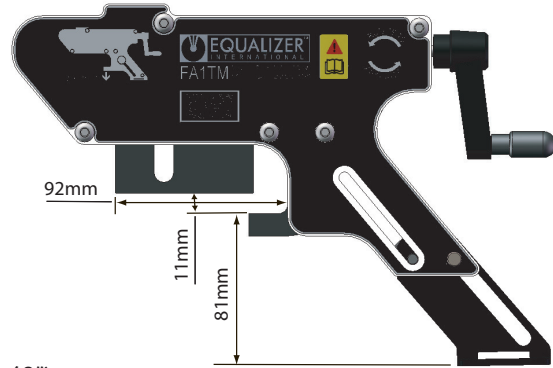


"Innovation in its most functional form"

Minimum Extension



Maximum Extension



Minimum applicable Bolt Hole Diameter 16mm (0.63")

## RANGE OF APPLICATION

### ASME Weld neck

Class	150	300	400	600	900	1500	2500
Range	2" - 14"	1 1/2" - 6"	2" - 3 1/2"	1 1/2" - 3 1/2"	1 1/2" - 2"	1 1/2" - 1 1/2"	1 1/2" - 1"

### DIN Weld neck

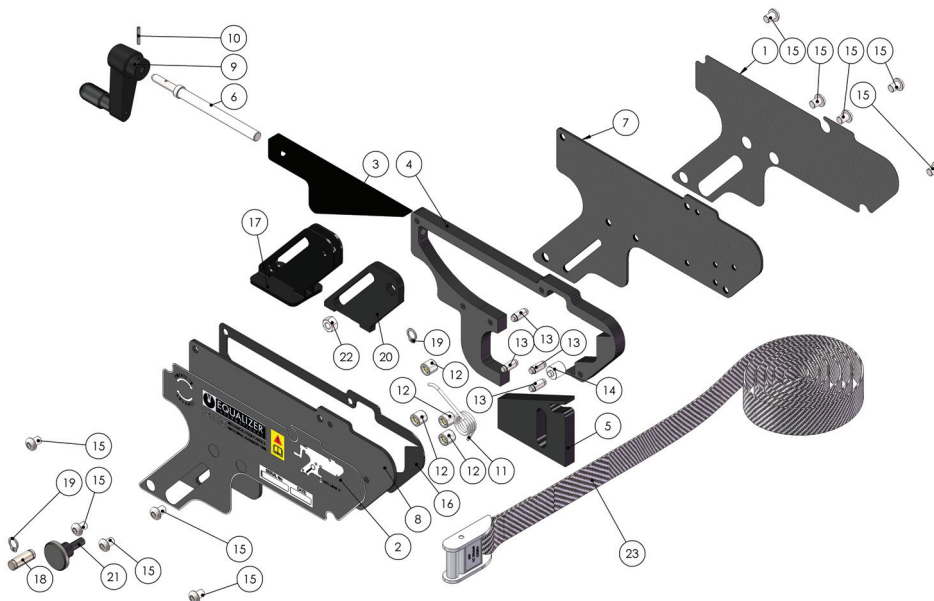
Class	PN16	PN25	PN40	PN64	PN100	PN160
Range	1 1/2" - 20"	1 1/2" - 12"	1 1/2" - 12"	1" - 5"	1" - 3"	1" - 2 1/2"

### SPO compact Weld neck

Class	150	300
Range	16" - 34"	8" - 18"

### BS10 Weld neck

Class	A	D	E	F	H
Range	8" - 42"	5" - 20"	7" - 22"	6" - 12"	6" - 12"



ITEM	PART No.	DESCRIPTION	QUANTITY
1	070280-01	- BODY PLATE - STICKER LEFT	01
2	070281-01	- BODY PLATE - STICKER RIGHT	01
3	210100-01	- DRIVING WEDGE	01
4	210200-01	- BODY FRAME	01
5	210300-01	- DRIVEN WEDGE	01
6	210400-01	- DRIVE SCREW	01
7	210500-01	- COVER PLATE	01
8	210501-01	- COVER PLATE RIGHT	01
9	210600-01	- CRANK HANDLE	01
10	210700-01	- SPRING PIN	01
11	210800-01	- TORSION SPRING	01
12	210900-01	- NEEDLE BEARING	04
13	211100-01	- BEARING SHAFT	04
14	211200-01	- SPRING MANDREL	01
15	211300-01	- SCREW	10
16	211600-01	- DISTANCE PLATE	01
17	211800-01	- DROP LEG	01
18	211900-01	- LEG PIN	01
19	212000-01	- SPRING RING	02
20	212200-01	- LEG PLASTIC INSERT	01
21	230203-01	- M6 RELEASE KNOB	01
22	771801-01	- HEX NUT	01
23	220800-01	- RATCHET STRAP	01